

Delta FMC 3525

Specifications

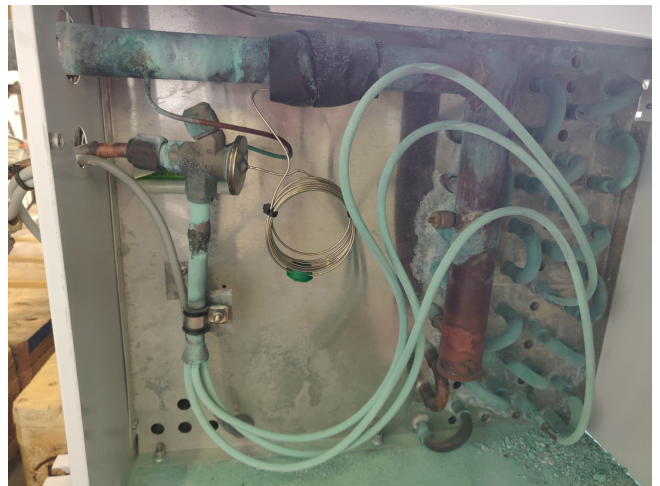
| | |
|-------------------|-----------------------------|
| Brand | Delta |
| Type | FMC 3525 |
| kW | 5.28 |
| Refrigerant | Freon |
| Number of Fans | 2 |
| Fin Space in mm | 7 |
| Defrosting | None |
| m ³ /h | 3500 |
| Sizes | 1019x582x470 mm (LxWxH). |
| Remarks | Y.O.B. 2006 |
| Volume | 7.2dm ² |
| Weight | 55kg |
| Stock | 1 |

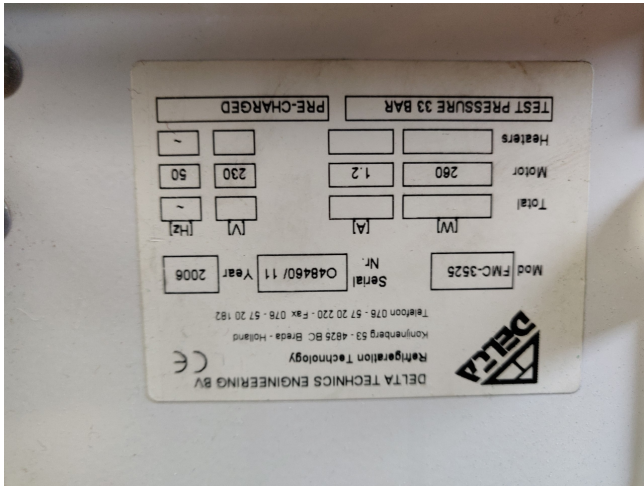


Description

Used Delta FMC 3525

Used Delta FMC 3528 evaporator build in 2006 with 2 Fans, diameter 350mm, Airflow 3500 m³/h, volume 7.2 dm³, weight 55Kg "*Why choose for HOSBV? Were not only the largest used refrigeration specialist in Europe, but also, we deliver all equipment including an extensive test, warranty and industrial cleaning. Optional we can arrange shipment and export documents."





| MODEL | CAPACITY | | FANS | | | | GENERAL | | | | |
|----------|-------------------------|--------------------------|--------------------|---------------------|--------------------|-------------------------|------------------------|-------------------------|----------------------------|-------------------------|--|
| | R404A DT1 = 8K kW | Lucht Airflow m³/h | Aantal No. # | Diameter Ø mm | Worp Throw m | Vermogen Power kW | Stroom Current A | Inhoud Volume dm³ | Oppervlak Surface m² | Gewicht Weight kg | |
| Ø 350 mm | | | | | | | 2.30 / 1 / 5.0 | | | | |
| FMC 3513 | 1.23 | 2250 | 1 | 350 | 14 | 0.14 | 0.60 | 1.3 | 6.9 | 18 | |
| FMC 3514 | 1.50 | 2150 | 1 | 350 | 14 | 0.14 | 0.60 | 1.8 | 9.2 | 20 | |
| FMC 3515 | 1.90 | 2050 | 1 | 350 | 14 | 0.14 | 0.60 | 2.2 | 11.5 | 22 | |
| FMC 3516 | 2.16 | 1900 | 1 | 350 | 14 | 0.14 | 0.60 | 2.7 | 13.8 | 24 | |
| FMC 3518 | 2.63 | 1750 | 1 | 350 | 14 | 0.14 | 0.60 | 3.6 | 18.4 | 28 | |
| FMC 3523 | 2.49 | 4500 | 2 | 350 | 14 | 0.27 | 1.20 | 2.6 | 13.8 | 35 | |
| FMC 3524 | 3.17 | 4300 | 2 | 350 | 14 | 0.27 | 1.20 | 3.6 | 18.4 | 39 | |
| FMC 3525 | 3.83 | 4100 | 2 | 350 | 14 | 0.27 | 1.20 | 4.5 | 23.0 | 43 | |
| FMC 3526 | 4.36 | 3800 | 2 | 350 | 14 | 0.27 | 1.20 | 5.4 | 27.6 | 47 | |
| FMC 3528 | 5.28 | 3500 | 2 | 350 | 14 | 0.27 | 1.20 | 7.2 | 36.8 | 55 | |
| FMC 3535 | 5.80 | 6150 | 3 | 350 | 14 | 0.41 | 1.80 | 6.8 | 34.5 | 82 | |
| FMC 3536 | 6.51 | 5700 | 3 | 350 | 14 | 0.41 | 1.80 | 8.1 | 41.4 | 70 | |
| FMC 3538 | 7.94 | 5250 | 3 | 350 | 14 | 0.41 | 1.80 | 10.8 | 55.2 | 82 | |
| FMC 3546 | 8.70 | 7600 | 4 | 350 | 14 | 0.54 | 2.40 | 10.8 | 55.2 | 93 | |
| FMC 3548 | 10.73 | 7000 | 4 | 350 | 14 | 0.54 | 2.40 | 14.4 | 73.6 | 109 | |
| FMC 3556 | 11.00 | 9500 | 5 | 350 | 14 | 0.68 | 3.00 | 13.5 | 69.0 | 116 | |